

100 Lb Full-Extension Soft-Closing Ball Bearing Slide



Features

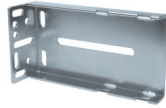
- ▶ Full extension
- ▶ Side mount
- ▶ Height: 1-13/16" (45.7 mm)
- ▶ Lengths: 12" – 28"
- ▶ Side spacing: 1/2" (+ 1/32" – 0")
12.7 mm (+ 0.38 mm – 0 mm)
- ▶ Load rating: 100 lbs (22" length)
- ▶ Electro zinc finish (black available)
- ▶ Packaging: 10 pair per carton
- ▶ Screw mounting system 32 mm compatible
- ▶ Patented Push button release for effortless drawer removal
- ▶ RoHS Compliant

- ▶ Pull force per drawer:
12 – 22": 2.4 – 3.4 kg
24 – 28": 3.4 – 4.4 kg
- ▶ Patented exclusive "dry" damper soft close eliminating all leakage issues

Applications

- ▶ Kitchen cabinets
- ▶ Bedroom furniture
- ▶ Office furniture
- ▶ Commercial furniture

Optional Items -

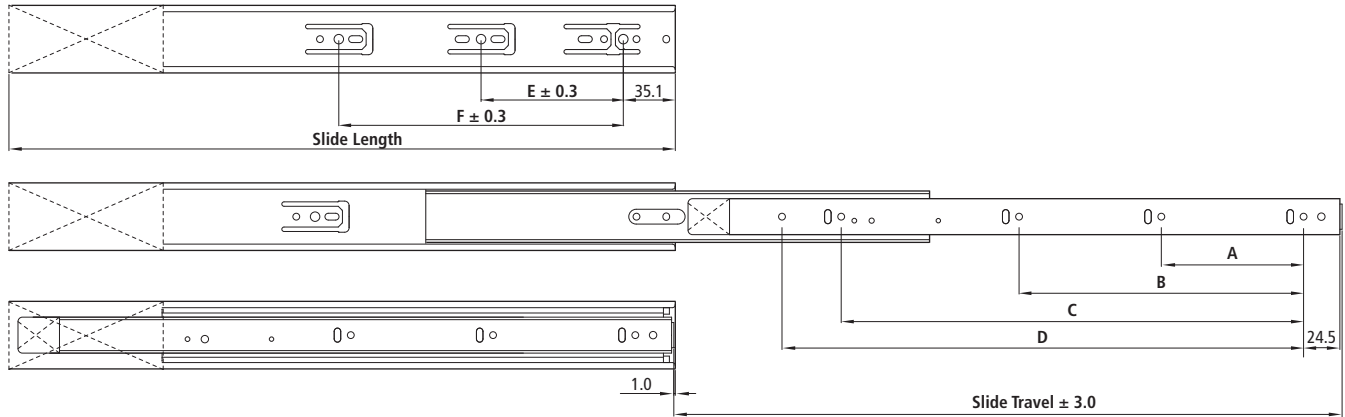


Item Number	Face Frame Rear Mounting Bracket
39.1145	Finish: trivalent



Item Number	Adjustable Plate
39.1140-AP	Finish: trivalent

Dimensions



	Length		Travel		A		B		C		D		E		F	
	Inches	mm	Inches	mm	Inches	mm	Inches	mm	Inches	mm	Inches	mm	Inches	mm	Inches	mm
39.1145.12	12	300	10	250	2-1/2	64					7-9/16	192				
39.1145.14	14	350	12-1/2	315	3-3/4	96					10-1/16	256	3-3/4	96		
39.1145.16	16	400	16	400	6-1/4	160					11-5/16	288	6-1/4	160		
39.1145.18	18	450	18	450	3-3/4	96	7-9/16	192			13-7/8	352	3-3/4	96	7-9/16	192
39.1145.20	20	500	20	500	3-3/4	96	8-13/16	224			15-1/8	384	5	128	10	256
39.1145.22	22	550	22	550	3-3/4	96	8-13/16	224			17-5/8	448	6-1/4	160	12-9/16	320
39.1145.24	24	600	24	600	5	128	8-13/16	224	16-3/8	416	18-7/8	480	7-9/16	192	13-7/8	352
39.1145.26	26	650	26	650	5	128	11-5/16	288	17-5/8	448	21-7/16	544	7-9/16	192	16-3/8	416
39.1145.28	28	700	28	700	5	128	11-5/16	288	18-7/8	480	22-11/16	576	8-13/16	224	17-5/8	448